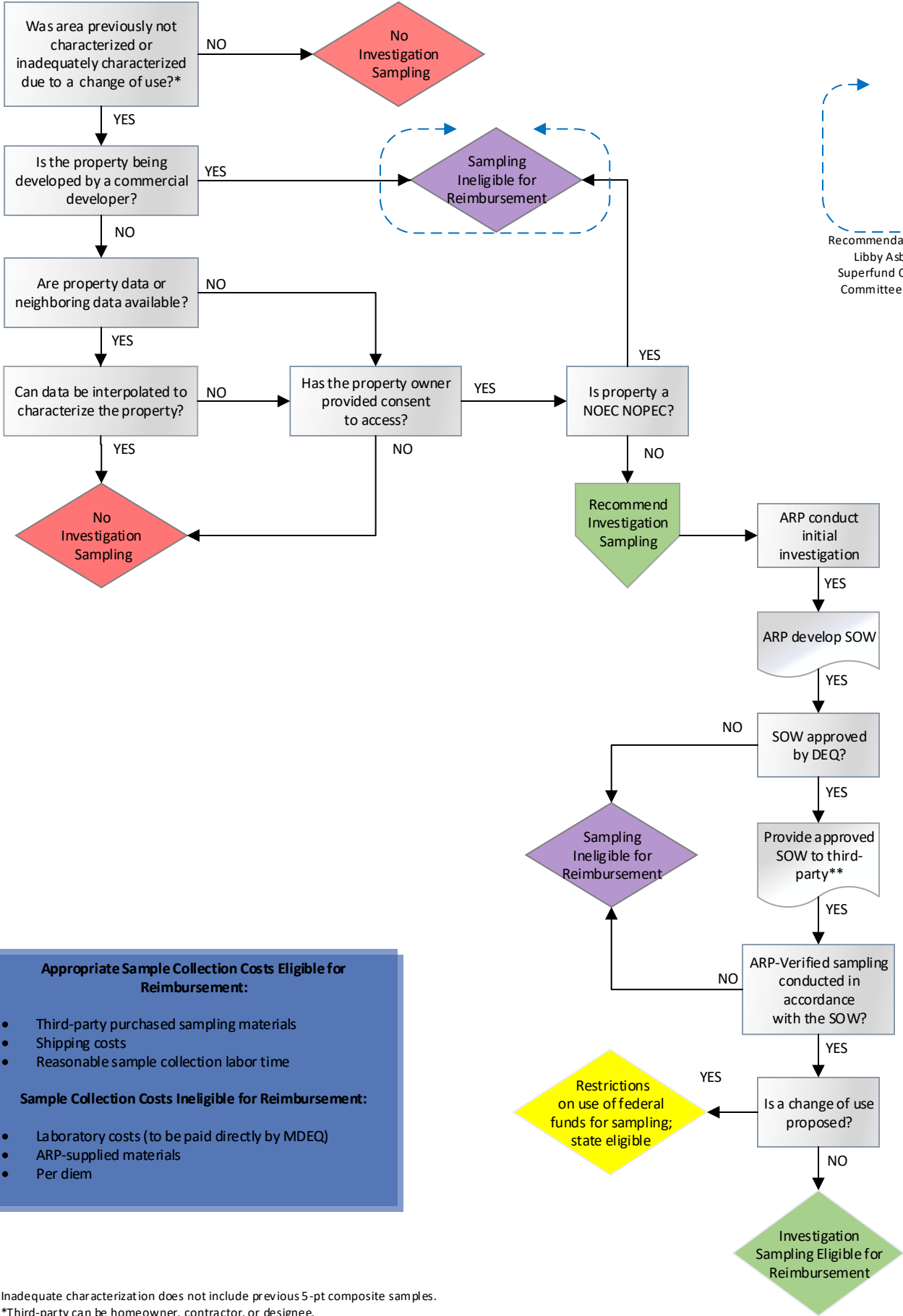


# Investigation Sampling Flow Chart For Non-Federal Properties

This document  
is DRAFT and  
for discussion  
purposes only.

03/20/2020

Recommendations from  
Libby Asbestos  
Superfund Oversight  
Committee Needed



- Appropriate Sample Collection Costs Eligible for Reimbursement:**

  - Third-party purchased sampling materials
  - Shipping costs
  - Reasonable sample collection labor time

**Sample Collection Costs Ineligible for Reimbursement:**

  - Laboratory costs (to be paid directly by MDEQ)
  - ARP-supplied materials
  - Per diem

\*Inadequate characterization does not include previous 5-pt composite samples.  
 \*\*Third-party can be homeowner, contractor, or designee.